

SPT Travel Centres

Buchanan bus station

Killermont Street, Glasgow G2 3NP

Monday - Saturday 0630 - 2230 (last ticket sale 2130)

Sunday 0700 - 2230 (last ticket sale 2130)

East Kilbride bus station

7 Olympia Way, East Kilbride G74 1JT

Monday - Saturday 0830 - 1730

Closed Sunday

Glasgow Airport travel centre

Domestic Arrivals, Glasgow Airport PA3 2ST

Monday - Sunday 0900 - 1700

Greenock travel centre

28 Kilblain Street, Greenock PA15 1SR.

Monday - Saturday 0830 - 1730

Closed Sunday

Hamilton travel centre

26 Brandon Street, Hamilton ML3 6AB

Monday - Saturday 0830 - 1730

Closed Sunday

St Enoch travel Centre

St Enoch Subway Station,

St Enoch Square, Glasgow G1 4BW

Sunday 1000 - 1700

Monday 0830 - 1730

Tuesday 0830 - 1730

Wednesday 0900 - 1700

Thursday - Saturday 0830 - 1730


SPT Travel Points

For a full list of SPT travel points, please visit www.spt.co.uk or contact your local travel centre.

Further travel information

For more information visit www.spt.co.uk or, call into any SPT Travel Centre where trained staff can provide comprehensive travel information for Strathclyde and beyond, including day trip tickets and long distance coach travel throughout the UK and Europe.
For a full list of Travel Centres please see inside.

Alternatively, for all public transport timetable enquiries call

 **traveline** Lines open 24Hrs, seven days
public transport info a week.
0871 200 22 33

For all rail enquiries you can also call National Rail Enquiry Service on **08457 48 49 50**, 24 hours, seven days a week.

This document is available on tape, in Braille, large print and various computer formats upon request by calling 0141 333 3282.

此小冊子備有中文譯本，
請致電 0141 333 3282 索取。

ਇਹ ਪਰਚਾ ਬੇਨਤੀ ਕਰਨ ਤੇ ਪੰਜਾਬੀ ਵਿਚ ਵੀ ਮਿਲ ਸਕਦਾ
ਹੈ। ਕਿਰਪਾ ਕਰਕੇ 0141 333 3282 ਤੇ ਫੋਨ ਕਰੋ।

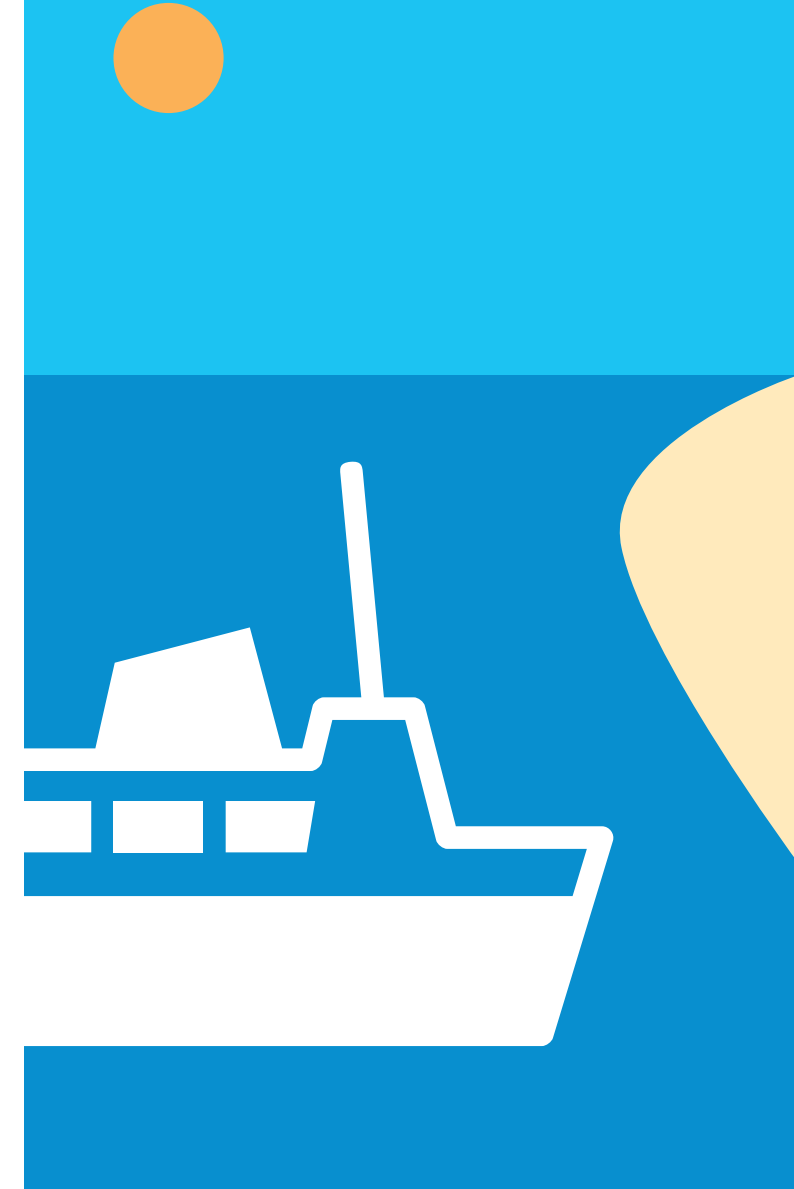
یہ دستی اشتہا اردو زبان میں دستیاب ہے،
حاصل کرنے کیلئے برائے مہربانی 0141 333 3282 پر فون کریں

**Bu brosurun Tukcesini asagidaki
numaradan isteyebilirsiniz : 0141 333 3282**

joining up
journeys



Kilcreggan ferry



The best way to see the stunning Clyde estuary is by the Kilcreggan ferry. It operates all year round between Kilcreggan, Helensburgh and Gourock and it's a great mini-cruise.

With a crossing time of less than 15 minutes from Gourock to Kilcreggan and 25 minutes from Kilcreggan to Helensburgh, the ferry is also a convenient link for those who wish to explore the Rosneath peninsula and travel further afield to Loch Lomond and Argyll.

If you're travelling from Helensburgh or Kilcreggan to Gourock, you can take a ferry to Dunoon or a train or bus to any destination south of the Clyde.

Both ZoneCard (with relevant zones) and Daytripper tickets are valid on the ferry. For details, visit your nearest SPT Travel Centre.

Fares

Single from Gourock to Kilcreggan or Helensburgh:

Adult £2.25 Child £1.15

10 journey Gourock to Kilcreggan (valid for 4 weeks)

Adult £15.75 Child £8.50

Children aged five or under travel for free if accompanied by a fare-paying adult. Maximum of two children per fare-paying adult.

Ferry service operated by Clyde Marine Transport Ltd on behalf of SPT. For Kilcreggan ferry enquiries call **01475 721 281**.

Although the vessel normally operating this service is fully wheelchair-accessible, the infrastructure at pierheads and prevailing weather conditions may, unfortunately, pose difficulties for passengers with mobility difficulties and such passengers are strongly urged to telephone 01475 721281 in advance of travel to ensure that the journey may be undertaken safely.

Summer Timetable: 29 March 2009 - 11 October 2009

Mondays to Saturdays

		NS	NS													
Glasgow Central	⇒	d	0555	0625	0705	0735	0905	1035	1125	1325	1435	1525	1535	1623	1725	
Paisley Gilmour St	⇒	d	0607	0636	0720	0750	0920	1050	1136	1336	1450	1536	1550	1638	1736	
Gourock	⇒	a	0636	0713	0757	0827	0958	1127	1206	1406	1527	1606	1627	1715	1805	
Gourock	⇐	d	0700	0730	0805	0835	1005	1135	1225	1415	1545	1615	1650	1725	1810*	
Kilcreggan	⇐	a	0712	0742	0817	1020	1147	1237	1430	1557	1627	1703	1737	1825	
Helensburgh	⇐	a	0905	1045	1455	1850	

Mondays to Saturdays

		NS	NS													
Helensburgh	⇐	d	0910	1050	1500	1855	
Kilcreggan	⇐	d	0715	0750	0820	0940	1115	1150	1245	1530	1600	1630	1705	1740	1920	
Gourock	⇐	a	0727	0802	0832	0952	1127	1202	1257	1542	1612	1642	1717	1752	1932	
Gourock	⇒	d	0747	0808	0906	1006	1136	1223	1306	1606	1623	1706	1723	1806	1945	
Paisley Gilmour St	⇒	a	0815	0837	0943	1043	1213	1252	1343	1643	1652	1743	1752	1843	2015	
Glasgow Central	⇒	a	0830	0848	0958	1058	1228	1303	1358	1658	1705	1758	1803	1858	2026	

Sundays

Glasgow Central	⇒	d	0920	1020	1120	1320	1420
Paisley Gilmour St	⇒	d	0935	1035	1135	1335	1435
Gourock	⇒	a	1012	1112	1212	1412	1512
Gourock	⇐	d	1115	1145	1315	1425	1615
Kilcreggan	⇐	a	1127	1440	1627
Helensburgh	⇐	a	1215	1345	1510

Sundays

Helensburgh	⇐	d	1220	1350	1515
Kilcreggan	⇐	d	1130	1545	1630
Gourock	⇐	a	1142	1250	1420	1557	1642
Gourock	⇒	d	1223	1323	1523	1623	1723
Paisley Gilmour St	⇒	a	1300	1400	1600	1700	1800
Glasgow Central	⇒	a	1315	1415	1615	1715	1815

Passengers must present themselves at the ferry gangway at least 2 minutes before the departure time. Passengers should be aware that on occasions of very low tides, the ferry may be unable to dock at Helensburgh. Please check SPT's website for details.

Rail times shown are valid until 16 May, 2009. For full details of connecting rail services from Gourock see First ScotRail's Strathclyde West and Clyde Coast timetable. For full details of rail services from Helensburgh see First ScotRail's Strathclyde North West timetable. Alternatively call National Rail Enquiries on 08457 48 49 50.

Winter Timetable 12 October 2009 - 28 March 2010 (does not operate on Sundays)

Mondays to Saturdays

		NS	NS													
Glasgow Central	⇒	d	0555	0625	0705	0735	0905	1035	1125	1325	1435	1525	1535	1623	1725	
Paisley Gilmour St	⇒	d	0607	0636	0720	0750	0920	1050	1136	1336	1450	1536	1550	1638	1736	
Gourock	⇒	a	0636	0713	0757	0827	0958	1127	1206	1406	1527	1606	1627	1715	1805	
Gourock	⇐	d	0700	0730	0805	0850	1005	1135	1225	1415	1545	1615	1650	1725	1810*	
Kilcreggan	⇐	a	0712	0742	0817	0902	1020	1147	1237	1430	1557	1627	1703	1737	1825	
Helensburgh	⇐	a	1045	1455	

Mondays to Saturdays

		NS	NS													
Helensburgh	⇐	d	1050	1500	
Kilcreggan	⇐	d	0715	0750	0820	0910	1115	1150	1245	1530	1600	1630	1705	1740	1830	
Gourock	⇐	a	0727	0802	0832	0922	1127	1202	1257	1542	1612	1642	1717	1752	1842	
Gourock	⇒	d	0747	0808	0906	0936	1136	1223	1306	1606	1623	1706	1723	1806	1906	
Paisley Gilmour St	⇒	a	0815	0837	0943	1013	1213	1252	1343	1643	1652	1743	1752	1843	1943	
Glasgow Central	⇒	a	0830	0848	0958	1028	1228	1303	1358	1658	1705	1758	1803	1858	1958	

Notes

NS Does not operate on a Saturday

a Arrival time

d Departure time

Times may be subject to alteration – please check before travelling. There are no sailings on 25 & 26 December and 1 & 2 January.

* On the 1810 journey from Gourock (Mon-Sat), should the train be late in arriving, the ferry will wait a maximum of 10 minutes, until 1820.